

STONE STATE PARK  
ROAD AND SKIDE REPAIR  
WOODBURY COUNTY, IOWA  
PROJECT NO. 20-01-97-01

March 12, 2021

*This Addendum is issued to modify, explain or correct the original Drawings and Specifications, and is hereby made a part of the Contract Documents. Please attach this Addendum to the Project Manual in your possession. Insert the number and issue date of this Addendum in the blank space provided on the Proposal Form.*

**PLANS**

**A. C.01**

- a. Estimate reference notes added:
  - Bid item 5 Culvert, Concrete Pipe, 2000D, Trenchless, 48"
    - o C. Connected pipe joints shall be incidental.
  - Bid item 7 Culvert, Concrete Roadway Pipe, 36"
    - o B. Precast bends shall be incidental.
    - o C. Connected pipe joints shall be incidental.
  - Bid Item 16 Native Seeding, Fertilizing, and Mulching
    - o A. A conventional native seeding application shall be used with hydromulch over the top.

**B. D.01**

- a. Grading limits labeled.

**C. D.04**

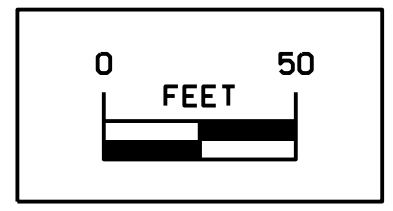
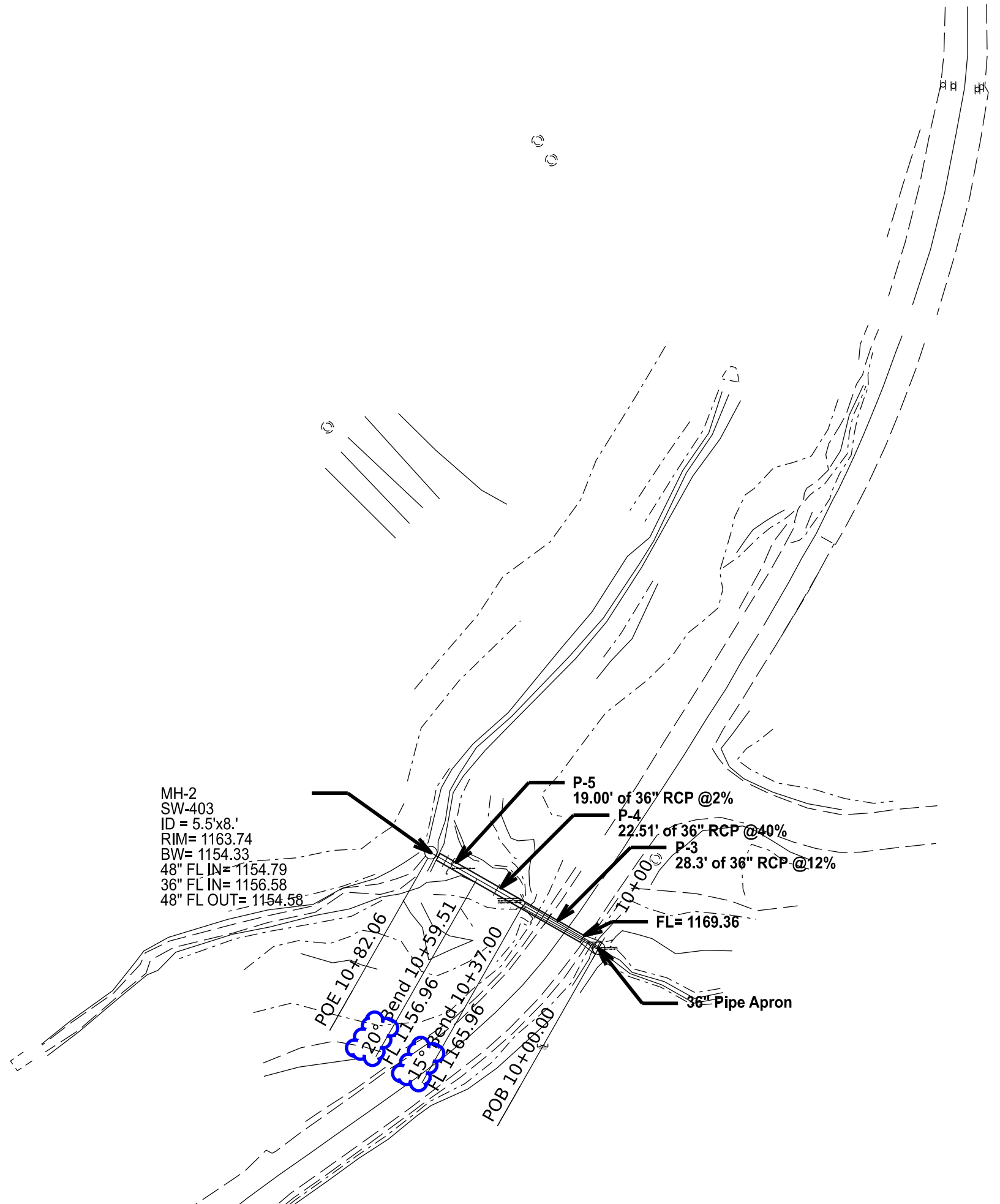
- a. Bend angles labeled.

**D. E.01**

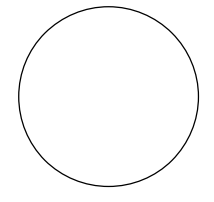
- a. Beginning and ending pavement removal stations labeled.
- b. Pavement removal area shaded.
- c. Tree removal limits labeled.







CONSULTANT:



**IOWA DEPARTMENT OF  
 NATURAL RESOURCES**  
 ENGINEERING SERVICES - WALLACE BUILDING  
 502 E. 9TH ST., DES MOINES, IA 50319-0034



**ROADWAY PIPE PLAN**

SLIDE REPAIR FOR:  
**STONE STATE PARK**  
 WOODBURY COUNTY

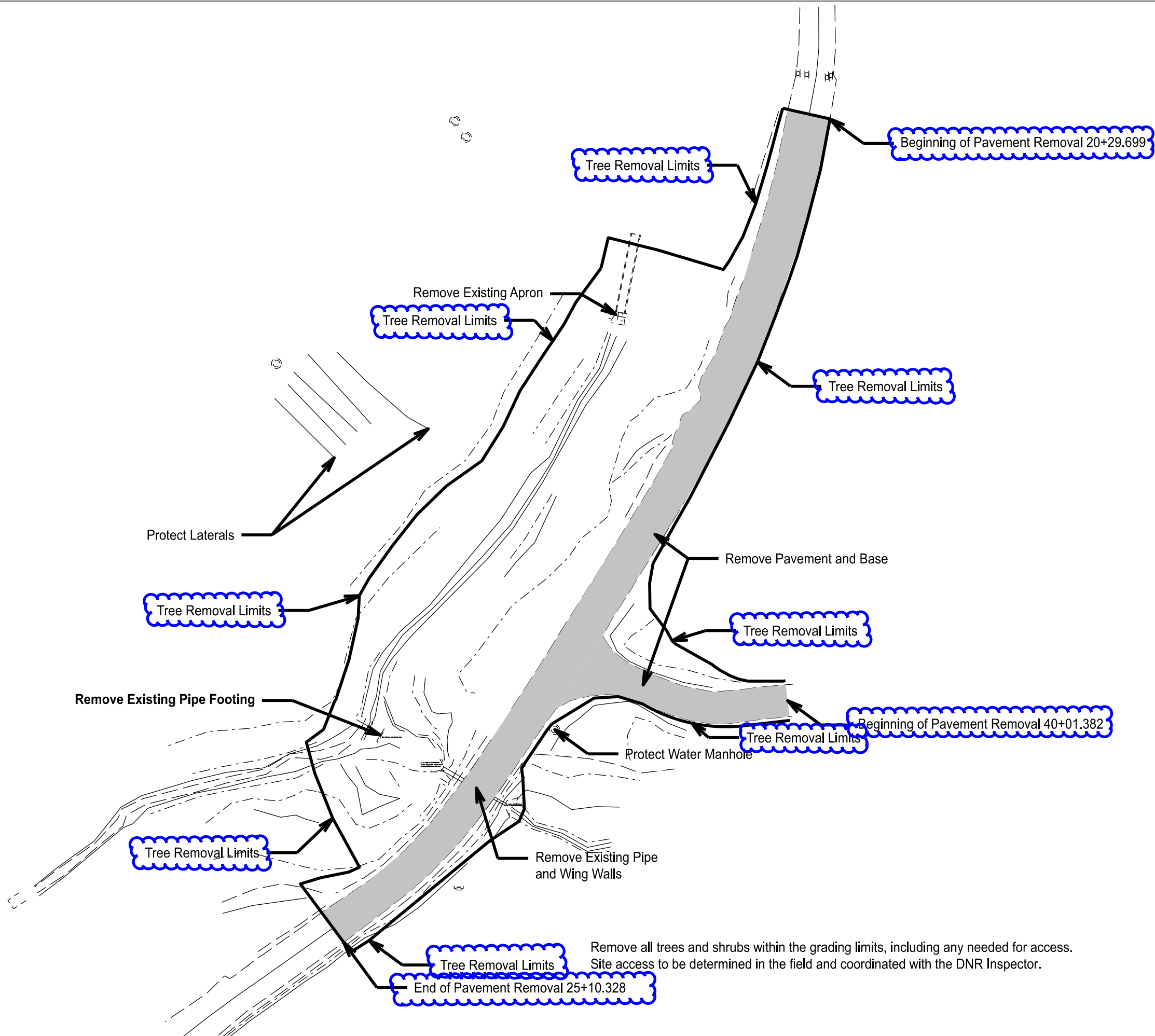
| NO. | BY | REVISION |
|-----|----|----------|
|     |    |          |
|     |    |          |
|     |    |          |
|     |    |          |
|     |    |          |
|     |    |          |
|     |    |          |
|     |    |          |
|     |    |          |

DRAWN BY: PROJECT NUMBER:  
 20-01-97-01

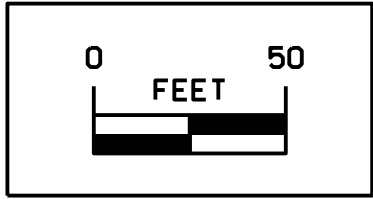
CHK'D BY: DATE:  
 FEBRUARY 2021

SHEET No:

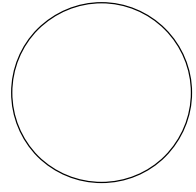
**D.04**



Remove all trees and shrubs within the grading limits, including any needed for access. Site access to be determined in the field and coordinated with the DNR Inspector.



CONSULTANT:



**IOWA DEPARTMENT OF NATURAL RESOURCES**  
 ENGINEERING SERVICES - WALLACE BUILDING  
 502 E. 9TH ST., DES MOINES, IA 50319-0034



**DEMOLITION PLAN**

SLIDE REPAIR FOR:

**STONE STATE PARK**

WOODBURY COUNTY

| NO. | BY | REVISION |
|-----|----|----------|
|     |    |          |
|     |    |          |
|     |    |          |
|     |    |          |
|     |    |          |
|     |    |          |
|     |    |          |
|     |    |          |
|     |    |          |

DRAWN BY: PROJECT NUMBER:  
20-01-97-01

CHK'D BY: DATE:  
FEBRUARY 2021

SHEET NO:

**E.01**